



Society Sketchbook

Issue 57

September, 2025

INSIDE:

- * Workshops booking info (page 3)
- * Exhibition Review (page 4)

DATES FOR YOUR DIARY

JAMEL AKIB

DEMONSTRATION:

Figures with movement in oils and acrylic
Thursday 25th September
 7.30pm, Bishop's Sutton Village Hall

JAMEL AKIB

WORKSHOP:

Figure with Movement in oil and acrylic
Saturday 11th October
 10am - 4pm Christy Hall, Old Alresford.
[Booking info page 3](#)

ALISON BOARD

DEMONSTRATION:

Animal Study in pastel and gouache
Thursday 23rd October
 7.30pm, Bishop's Sutton Village Hall

ROGER DELLAR

WORKSHOP:

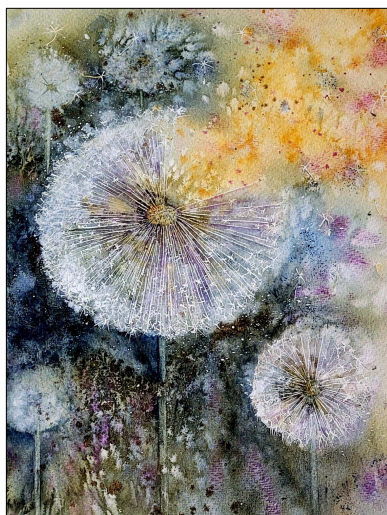
Pastel Interiors
Saturday 8th November
 10am - 4pm Christy Hall, Old Alresford.
[Booking info page 3](#)

NIGEL HALLIDAY

TALK: Christmas in Art
Thursday 27th November
 7.30pm, Bishop's Sutton Village Hall.

Followed by mulled wine and mince pies.

A REALLY SUMMERY EXHIBITION



Over 700 visitors browsed the artwork on show at our annual exhibition in the town's Community Centre in July, and most people took the opportunity to vote in the People's Choice competition for their favourite exhibit.

Jeannie Pakenham scooped the top prize with her beautiful watercolour *A Moment in Time* (left), to receive a £50 cash prize and a beautiful glass trophy to keep for a year. The runner up, *My Mother's Kitchen*, by Jenny Kennish, also won the Best Acrylic painting category, and Mike Dudfield's still life oil painting of *Lemons in a Bowl* came third.

The exhibition was again supported by Hellards estate agents. [See page four for more winners.](#)

GET MOVING WITH JAMEL AKIB

We are really excited that Jamel Akib will not only be demonstrating a Figure with Movement in oil and acrylic on Thursday 25th September, but also running a follow-up workshop, on the 11th October.

Jamel and his brother Hashim are exciting painters and a challenge to book as they are so busy and in demand.

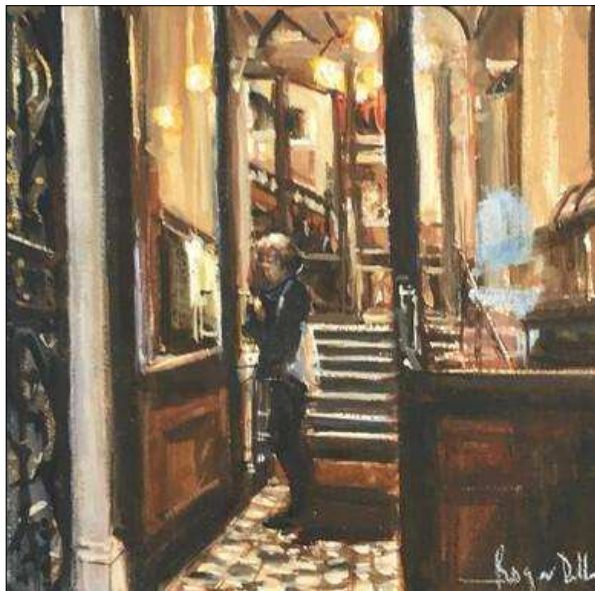
Jamel gained a BA honours Degree in Illustration in 1989 and began working for the Observer newspaper while still a student at art college. He has since become an award-winning artist involved in many exhibitions and commissions and has illustrated the covers for three Booker Prize finalists.

Make a date in your diary, he is not to be missed!



ROGER DELLAR WORKSHOP

Fans of Roger Dellar will be delighted to hear that he has agreed to do a Saturday workshop for us on the 8th November from 10-4 at the Christy Hall in Old Alresford. His subject will be Pastel Interiors.



You have asked us in the past why he has only come to demonstrate and not do a workshop to follow, but it is because he is so popular and always so busy, that we just couldn't make it work. After his last demo, Roger offered to run a stand-alone workshop and we think this is a great solution. *So don't delay, book your place today, details on page 3.*

GAUCHE WITH GOUACHE?

Melanie Cambridge was an informative, amusing and inspirational demonstrator at our June meeting.

Her medium was gouache, something most water-colourists only use to add highlights to a painting. She showed how it can be used like acrylic, building up layers and unlike watercolour, can be revived with water or mixed with other colours after drying. *Why not have a go?*



CHRISTMAS IN ART

Nigel Halliday is our speaker at the November 27th meeting at 7.30pm. A freelance art historian, lecturer and teacher, Nigel studied History of Art at Cambridge University and the Courtauld Institute.

He teaches the whole canon of Western art from Giotto onwards, but his main interests have been nineteenth and twentieth-century art.

This lecture looks at how artists have portrayed Christmas and its various elements, from the stylisation of Roman era mosaics to nineteenth-century realism. It also answers some of the key questions of Christmas: Why is there always an ox and an ass next to the manger? Doesn't Mary ever wear anything but blue? Why is Balthasar carrying a lemon meringue pie?

Mulled wine (including a non-alcoholic version) and mince pies, will be served after Nigel's lecture.



The Census at Bethlehem by Pieter Bruegel the Elder

WHAT'S UP DOC?

Maddie Attenborough is putting out a call for more paintings for the Alresford Surgery.



For those of you who don't live in Alresford, the doctors here are happy for the Art Society to use their walls as a display space. It not only shows the town what our members can do, but also brightens the walls of a place that might otherwise be cold and bare. Please contact Maddie if you would like to submit a painting/s as she would like to refresh the display during October. Paintings can be for sale/not for sale whichever you prefer.

Contact Maddie at maddieattenborough@gmail.com.

OUT AND ABOUT

Our first port of call for this year's painting days was the beautiful Itchen Stoke Mill. As one member put it, a wonderful opportunity to visit such a timeless and beautiful English place. Our host was generous and 30 members enjoyed the day out together in perfect weather.



In July we visited historic Godsfield Manor and were spoilt for choice - a beautiful 18thC farmhouse; a colourful garden and courtyard all surrounded by fields. An added dimension was the 12thC chapel built by The Order of the Knights Hospitallers of St John.



Thank you to our wonderful hosts who open their gardens to us and to Sue Cox who makes it all possible.



TO ABSTRACTION

Rebecca Hurst creates still life abstracts and landscapes promoting a sense of freedom.

At our May meeting she was lost in mark making, and daubed, scraped and blotted multiple paintings in mixed media, using mostly acrylic, but included chalk,



pencil, bubble wrap, card and fingers to achieve her goal. It is fair to say that opinions were divided.

BOOK YOUR WORKSHOP TODAY

STEP ONE

Contact Anne Lain to check availability on the workshop by email at anne.lain627@gmail.com or telephone/text 07785 715 985.

STEP TWO

If there are still places available pay £40 by BACS to Lloyds Bank, Sort Code, 30-64-72, Account No. 31331268 with the artist's name as reference. Please send the details of any BACS payments to Anne Lain as above.

If paying by cheque please send a separate cheque for £40 for each workshop **and put the workshop name on the back of each cheque** to Anne Lain, 1 Bramble Hill, Alresford SO24 9JY.

Bookings are taken on a first-come first-served basis and your place is not guaranteed until a cheque or a BACS payment has been received.

WORKSHOP PROGRAMME

JAMEL AKIB

Figure with movement, oil and acrylic

11th October (Saturday)

10-4, Old Alresford, Christy Hall

ROGER DELLAR

Pastel interiors

8th November (Saturday)

10-4, Old Alresford, Christy Hall

Any queries email anne.lain627@gmail.com or telephone/text 07785 715 985.

EXHIBITION continued

The exhibition was opened by Alresford resident and past Mayor, Cllr Russell Gordon-Smith, who had been due to open the exhibition last year when he was Mayor. The general election threw us a curved ball in 2024, so he was a year late, but nevertheless welcome.



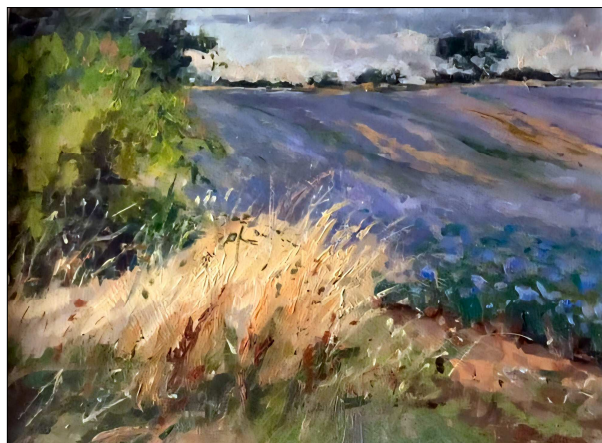
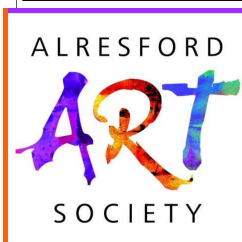
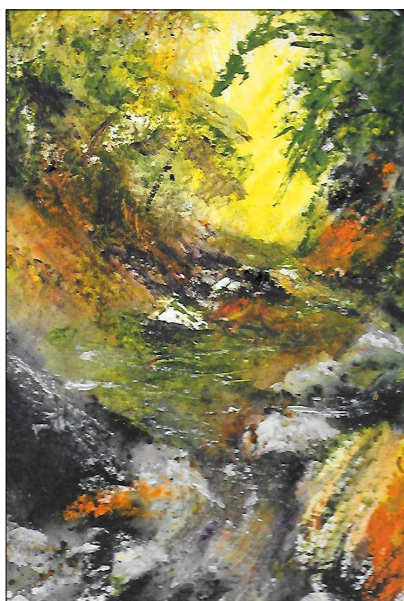
Best Acrylic: *My Mother's Kitchen* by Jenny Kennish

A regular visitor to the exhibition each year, he is himself a talented draughtsman and painter and hinted that he might become an Art Society member one day.

Other winners included Best Oil: *Lavender Hillside, Alresford* by Amanda Fry, Best Watercolour: *Shady Lagoon* by Joanne May, Best Floral: *Magnolia Glory* in pastel, by Eileen Watson and Best Mixed Media: *The World Is Burning* by Jan Symons.

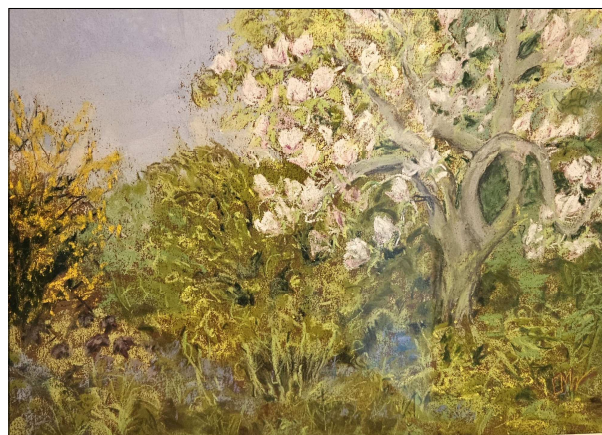
The standard of entries was very high this year, and many visitors commented on the quality of the artwork on display. It was a real taste of summer with English country gardens, sunny landscapes, coastal scenes, sunsets, rivers, cool woodlands and memories of holidays in exotic places, as well as an abundance of blooms.

Best Watercolour:
Shady Lagoon by
Joanne May



Best Oil: *Lavender Hillside, Alresford* by Amanda Fry

Special thanks to Charly Savory, Barbara Fitzgerald and Jeannie Pakenham for tackling the difficult task of hanging the show and to Society Secretary Jen Boardman for wrangling the paperwork. Also to our trio of speedy judges Penny Metcalfe, Rachael Alexander and Gill Grant who have all agreed to come back next year!



Best Floral: *Magnolia Glory* in pastel by Eileen Watson

A WARM WELCOME TO NEW MEMBERS

We are delighted to have welcomed eighteen new members since the end of January.

Please welcome:

Patrick Stratton, Janet Maguire, Hugh Dumas, Kelly Barker, Mark Lombard, Soumya Shara, Diana Robbins, Janice Griffiths, Brian Robinson, Keith Blanshard, Joanna White, Judith Cowen, Kirstie-Ann Turner, Margaret Sippings, Helen Bisby, Sheila Corby Dale, Kaye Osborne and Clive Tong.

We do hope you enjoy being members of our thriving society.

email: artsociety@alresford.org

www.artsociety.alresford.org

This newsletter is edited by Sue Gentry, 07802 354444, sue.gentry@gentrypublicity.co.uk